



www.alfaromeo.co.uk

# Giulietta

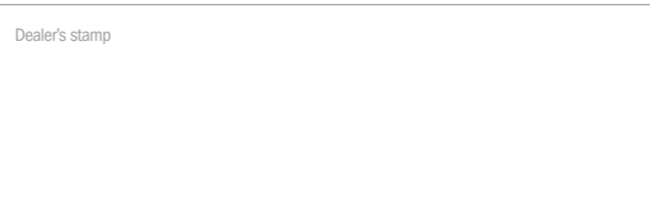



Data, descriptions and illustrations are intended solely as a guide and product characteristics may differ from those represented, sometimes for manufacturing reasons. Alfa Romeo reserves the right to make any changes to its products. Some of the items described and photographed in the leaflet are options. See the price list for a full list.

Alfa Romeo - Marketing - 02.9.0476.52 - S - 05/10 - Printed in Italy - Arti Grafiche Giaccone - Chieri (TO)

For information: freephone **Alfa InfoMore**  
00 800 2532 0000

Dealer's stamp





**STUNNING.** Be bold; stand out from the crowd, confident in your personal style. **STRONG.** RELAX: the latest generation of safety technology is there to protect you and your passengers. **AGILE.** Feel how intuitive control translates your every thought into movement, precisely. **THRILLING.** Performance to make your heart race, with advanced technology that cuts emissions and consumption. **WELCOMING.** A STYLISH PERSONAL SPACE, your haven from the outside world. **INDIVIDUAL.** Discover new horizons in your own way, at your own pace. **ALFA ROMEO GIULIETTA.** **TOMORROW'S ALFA, TODAY.**





The Giulietta's interior design conveys a lasting impression of **QUALITY**, featuring carefully-crafted materials in subtle shades enlivened by **CONTRAST AND HIGHLIGHTS**. There's a hint of tradition in the distinctive dashboard and switchgear, inspired by the 8C Competizione, with a three-spoke steering wheel and supportive seats. Yet there's genuine **COMFORT FOR FIVE** people, with 350 litres of luggage space too. ■



The crisp rasp of an Alfa Romeo engine promises **RESPONSIVE PERFORMANCE** at the touch of the throttle, yet the Giulietta's range of Euro 5 petrol and diesel engines are also fuel-efficient and environmentally responsible. For example, the new 1.4 TB MultiAir 170 bhp uses revolutionary **MULTIAIR** technology to develop more power whilst at the same time delivering up to 10% lower fuel consumption and CO<sub>2</sub> emissions. Economy and emissions are further improved by **START & STOP**, which automatically cuts the engine in town traffic. This feature, which can be deactivated when necessary, is standard on all models apart from the 1750 TBI. ■

## Engines

	1.4 TB	1.4 TB MultiAir	1750 TBI	1.6 JTDm-2	2.0 JTDm-2
<b>Displacement (cc)</b>	1368	1368	1742	1598	1956
<b>Max. power output bhp (kW) at rpm</b>	120 (88) 5000	170 (125) 5500	235 (172.5) 5500	105 (77) 4000	170 (125) 4000
<b>Peak torque Nm (kgm) at rpm</b>	206 (21.0) 1750	250 (25.4) 2500	340 (34.6) 1900	320 (32.5) 1750	350 (35.6) 1750
<b>Kerb weight DIN (kg)</b>	1280	1290	1320	1310	1320
<b>Top speed mph (km/h)</b>	121 (195)	135 (218)	150 (242)	115 (185)	135 (218)
<b>Acceleration (driver + 30 kg) 0 to 62 mph (s)</b>	9.4	7.8	6.8	11.3	8.0
<b>Fuel Consumption / combined cycle mpg (l/100km)</b>	44.1 (6.4)	48.7 (5.8)	37.2 (7.6)	64.2 (4.4)	60.1 (4.7)
<b>Exhaust emissions – CO<sub>2</sub> (g/km)</b>	149	134	177	114	124
<b>Emissions Standard</b>	EURO 5	EURO 5	EURO 5	EURO 5	EURO 5
<b>Start &amp; Stop</b>	Standard	Standard	Not available	Standard	Standard

## Dimensions

Length (mm)	Width (mm)	Height (mm)	Wheelbase (mm)	Luggage capacity (litres)	Doors
4350	1798	1465	2634	350	5

## Exterior colours



**296**  
Ghiaccio White (opt 5B2)



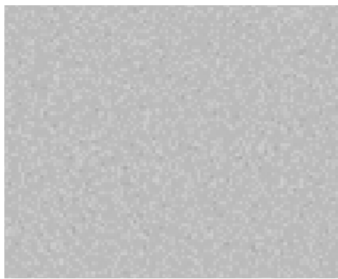
**134**  
8C Red (opt 270)



**601**  
Black



**106**  
Metallic Alfa Red (opt 5DT)



**620**  
Alfa Silver (opt 210)



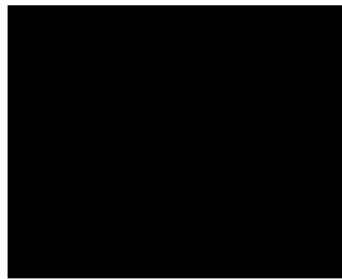
**318**  
Magnesio Grey (opt 210)



**319**  
Antracite Grey (opt 210)



**466**  
Profondo Blue (opt 210)



**805**  
Etna Black (opt 58B)

## Trims

### Turismo

- Alfa code immobiliser
- 6 Airbags - Driver, passenger, front side & window
- Isofix attachments for child seat protection
- VDC (ABS + ASR + EBD + Brake Assistant) with Hill Holder
- Alfa Romeo D.N.A. (Vehicle's dynamic control switch)
- Electronic Q2
- Multifunctional display and trip computer
- LED Daytime Running Lights
- Rear cluster LED lights
- Diesel Particulate Filter (DPF) – Diesel only
- Start & Stop technology
- Electronic key with remote central locking and boot release
- Safe lock
- Manual air conditioning
- Front and rear electric windows
- Electrically heated and adjustable wing mirrors
- Sports dials with red illumination
- Sprint cloth upholstery
- Height adjustable driver seat
- 60/40 split folding rear seats
- Steering wheel with chrome grey inserts
- Car radio with CD / MP3 player and 6 speakers
- Bumpers and wing mirrors in body colour
- Rear spoiler
- 16" steel wheels with spoke design rims and 205/55 R16 tyres
- Space saver 16" spare steel wheel\*

\* Replaced with Fix&Go puncture kit when BOSE® sound system is specified

### Lusso

#### As Alfa Giulietta Turismo plus:

- Alarm system
- Fog lights
- Chrome effect window sills
- Sports dials with white illumination
- Steering wheel with remote controls & matte black inserts and gear knob in leather
- Cruise control
- Front armrest with storage compartment
- Storage pockets behind front seats
- Blue&Me™ (Bluetooth™ hands-free system with voice recognition and media player with USB port)
- Dual zone automatic climate control
- Competizione cloth upholstery
- Height adjustable passenger seat
- Visibility pack (rain, dusk & condensation sensors, AQS\*\*., electrochromic rear view mirror with deactivation button and tinted band on windscreen)
- 16" 5 double spoke alloy wheels with 205/55 R16 tyres

\*\* AQS (Air Quality System)

### Veloce

#### As Alfa Giulietta Turismo plus:

- Alarm system
- Darkened headlights
- Fog lights
- Chrome effect window sills
- Satin effect wing mirrors
- Side skirts
- Sports suspension
- Darkened interior headlining
- Aluminium kick plates
- Aluminium sports pedals
- Dark brushed aluminium trim inserts
- Sports dials with white illumination
- Sports steering wheel with remote controls & matte black inserts and gear knob in leather with red stitching
- Cruise control
- Front armrest with storage compartment
- Storage pockets behind front seats
- Blue&Me™ (Bluetooth™ hands-free system with voice recognition and media player with USB port)
- Dual zone automatic climate control
- Leather and microfibre upholstery
- 17" Turbine design alloy wheels with 225/45 R17 tyres
- Space saver 17"/18" spare steel wheel

### Cloverleaf

#### As Alfa Giulietta Veloce plus:

- Dark tinted windows
- Cloverleaf badge
- Red brake callipers
- Lowered sports suspension
- Visibility pack (rain, dusk & condensation sensors, AQS\*\*., electrochromic rear view mirror with deactivation button and tinted band on windscreen)
- 18" Spoke design alloy wheels with dark titanium finish with 225/40 R18 tyres

## Upholstery

### Sprint cloth



**298**

Black

### Competizione cloth



**168**

Black



**125**

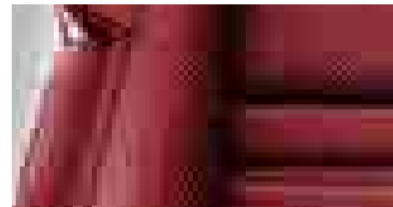
Black-Grey

### Leather



**423 - 923**

Black sport leather with red stitching



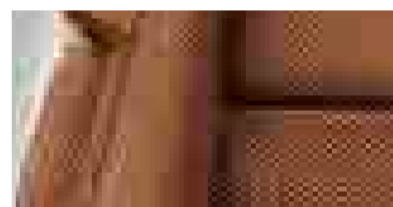
**401 - 901**

Red sport leather with red stitching



**402 - 408**

Black woven leather



**495 - 465**

Natural woven leather

### Leather and microfibre



**323**

Black with red stitching

## Colour combinations

TRIM	TURISMO				LUSSO				VELOCE - CLOVERLEAF			
	Sprint Cloth	Woven Leather		Competizione Cloth		Woven Leather		Sports Leather		Leather and Microfibre	Sports Leather	
SEAT COLOUR	Black	Black	Natural	Black	Black/ grey	Black	Natural	Red with red stitching	Black with red stitching	Black with red stitching	Black with red stitching	Red with red stitching
Opt code	<b>298</b>	<b>402</b>	<b>495</b>	<b>168</b>	<b>125</b>	<b>408</b>	<b>465</b>	<b>401</b>	<b>423</b>	<b>323</b>	<b>923</b>	<b>901</b>
STEERING WHEEL	Black				Black leather				Black leather with red stitching			
STEERING WHEEL INSERTS	Chrome grey				Matte black				Matte black			
DASHBOARD INSERTS	Chrome grey				Magnesium grey				Dark brushed aluminium			
SOLID PAINT												
<b>601</b> Black	•	•	•	•	•	•	•	•	•	•	•	•
SPECIAL PAINT												
<b>296</b> Ghiaccio White	•	•	•	•	•	•	•	•	•	•	•	•
MICALISED PAINT												
<b>805</b> Etna Black	•	•	•	•	•	•	•	•	•	•	•	•
METALLIC PAINT												
<b>106</b> Metallic Alfa Red	•	•	•	•	-	•	•	•	-	•	•	-
<b>620</b> Alfa Silver	•	•	•	•	•	•	•	•	•	•	•	•
<b>318</b> Magnesio Grey	•	•	•	•	•	•	•	•	•	•	•	•
<b>319</b> Antracite Grey	•	•	•	•	•	•	•	•	•	•	•	•
<b>466</b> Profondo Blue	•	•	•	•	-	•	•	•	•	•	•	•
EXCLUSIVE PAINT												
<b>134</b> 8C Red	•	•	•	•	•	-	•	•	•	-	•	-

## Lusso trim insert

EXTERIOR COLOURS									
DASHBOARD INSERTS	Black	Ghiaccio White	Magnesio Grey	Antracite Grey	Profondo Blue	Alfa Silver	Etna Black	Metallic Alfa Red	8C Red
<b>5VF</b> Magnesio Grey	•	•	•	•	•	•	•	•	•
<b>6AW</b> Red	•	-	•	•	-	-	•	•	-
<b>68W</b> Ghiaccio White	•	•	•	•	-	-	•	•	-
<b>4MP</b> Dark brushed aluminium	•	•	•	•	•	•	•	•	•